



**JET<sup>i</sup>**

**Thrombectomy  
System**

Powerful  
**THROMBECTOMY** for the  
Toughest Peripheral Clot





# Powerful Thrombectomy for the Toughest Peripheral Clot

- ✓ Rapid, aggressive clot removal
- ✓ Gentle to the vessel wall
- ✓ Designed for a single session procedure with or without adjunctive thrombolytics



Saline jet inside catheter macerates clot without clinically significant hemolysis

**Clot Detect™** – advanced clot sensing provides flow feedback to reduce blood loss

**HyperPulse™** – optional thrombolytic infusion mode<sup>1</sup>



Federal law restricts the JETi device to sale by or on the order of a licensed physician

<sup>1</sup> HyperPulse™ is CE marked, not cleared by the FDA  
MM0006-OUS, Rev. A



## Arterial JETi Case



Thrombosed femoral stent

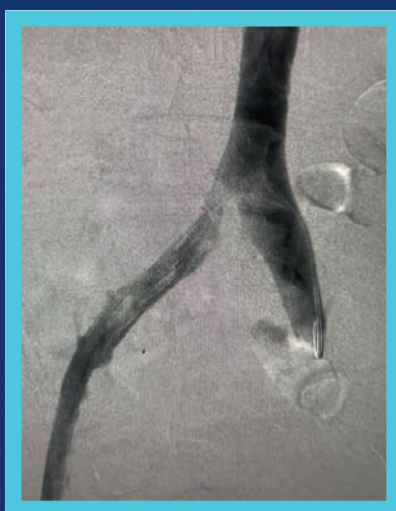


Post JETi thrombectomy, vessel fully patent

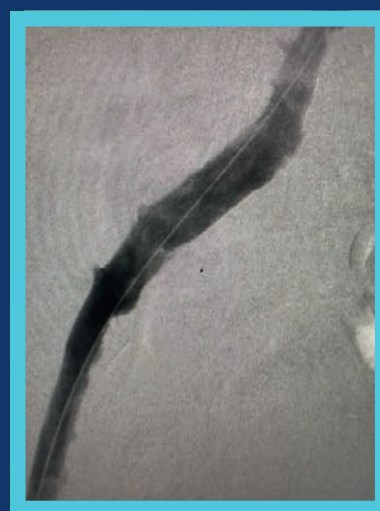
## Venous JETi Case



Thrombosed Iliac vein



Post JETi thrombectomy and balloon maceration



Post stent, vein fully patent

# JETi® Thrombectomy System

Description	REF Number	Guide Wire Size
<b>Sterile Disposables</b>		
JETi 8Fr Catheter (100 cm)	WV8100	0.014" - 0.035"
JETi Pump Set	WV06PS01	
Pressure Monitoring	K11-01392	
Suction Tubing	28-0206	
<b>Non-Sterile Disposables</b>		
Canister 850 cc	HCS7850	
Bacteria Filter	01-90-3928	
<b>Capital Equipment</b>		
JETi Saline Drive Unit	WV0008	
Vacuum pump	01-23-0405	



USA Toll Free: +1-844-796-8324

International: +1-949-422-1222

Email: [support@walkvascular.com](mailto:support@walkvascular.com)

[www.JETi8.com](http://www.JETi8.com)